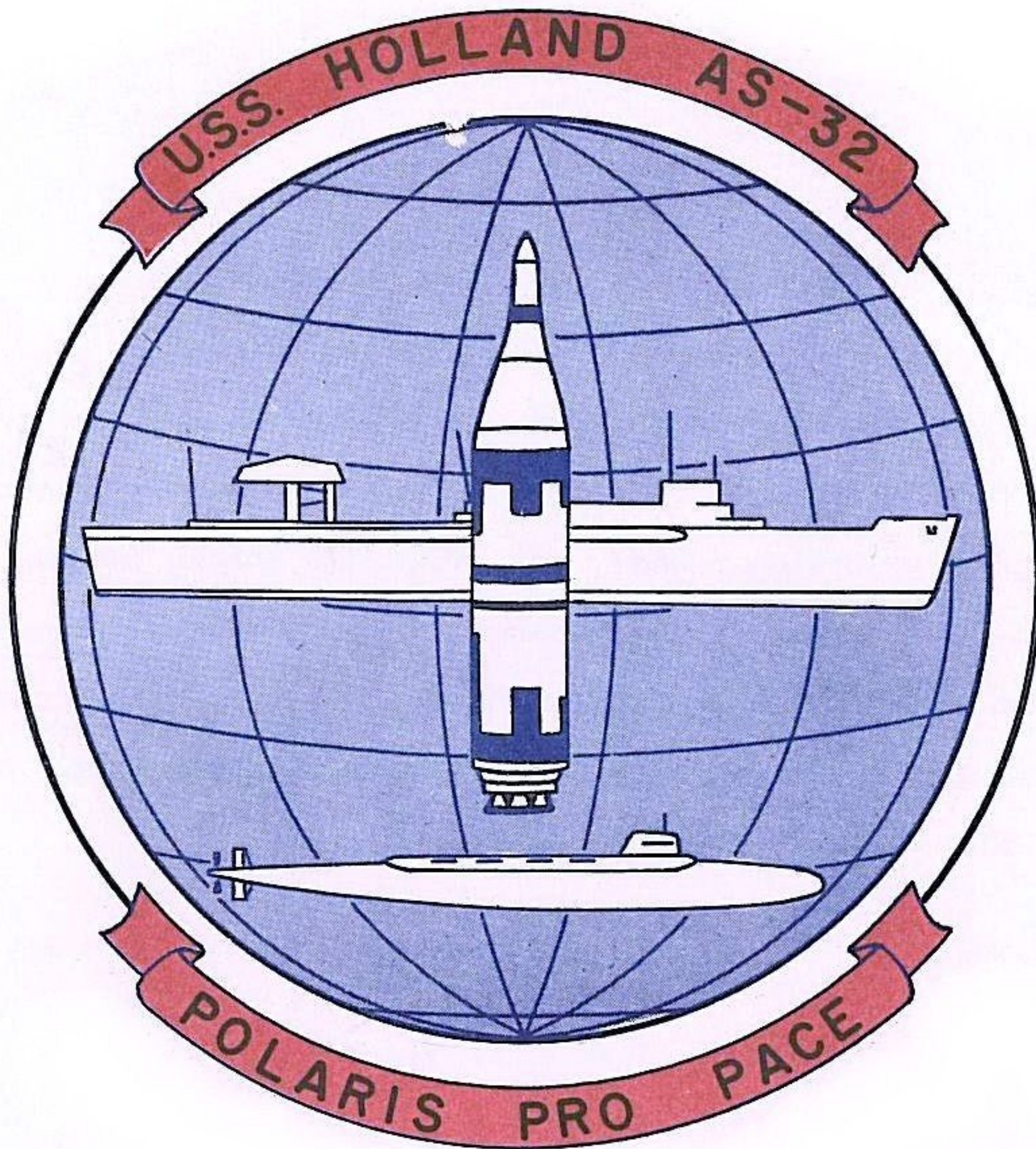


# *Commissioning*



**UNITED STATES NAVAL BASE  
CHARLESTON, SOUTH CAROLINA**

**7 SEPTEMBER 1963**





## NAVAL COMMISSIONING

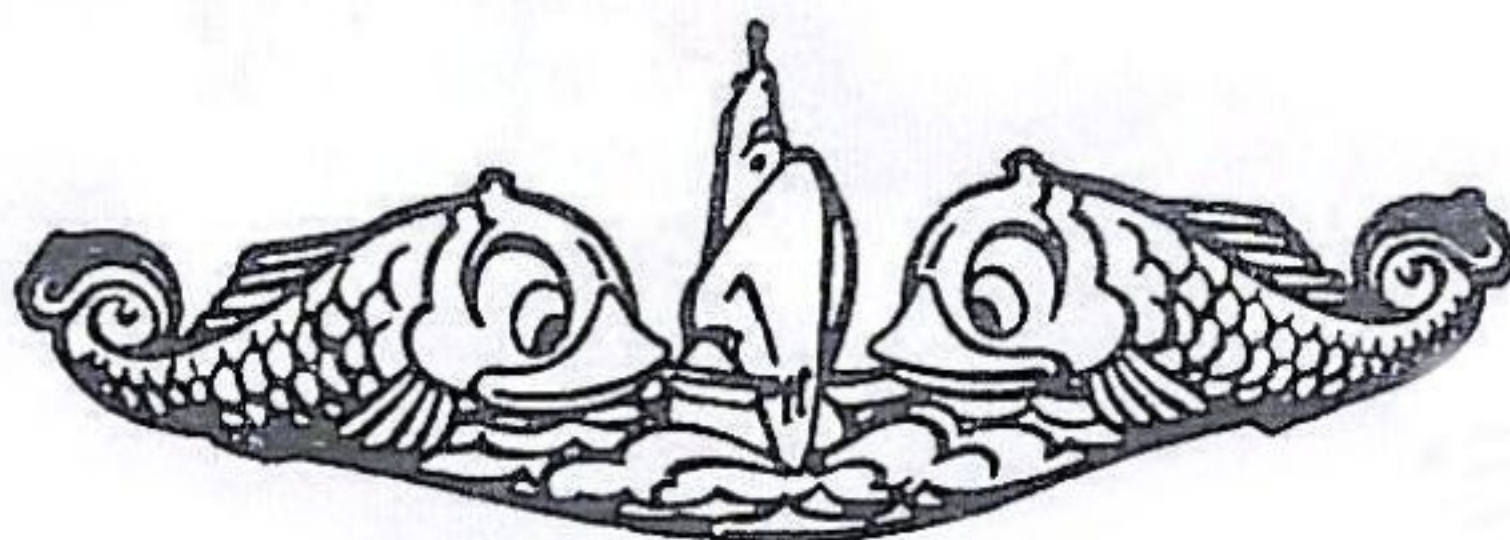
---

The commissioning ceremony marks the initiation of service of a ship of the operating forces of the United States Navy. At the moment of breaking her commission pennant, USS HOLLAND (AS-32) becomes the responsibility of her Commanding Officer, Captain Charles W. Styer, Jr., USN, who together with the ship's company, then has the duty of making and keeping her constantly ready for any service demanded by our country in peace or war.

---

---

UNITED STATES SHIP  
HOLLAND (AS-32)



Built by  
The Ingalls Shipbuilding Corporation  
Pascagoula, Mississippi

★ ★ ★

Keel Laid: 5 March 1962  
Launched: 19 January 1963  
Commissioned: 7 September 1963

★ ★ ★

SPONSOR  
Mrs. John C. Stennis

---

---

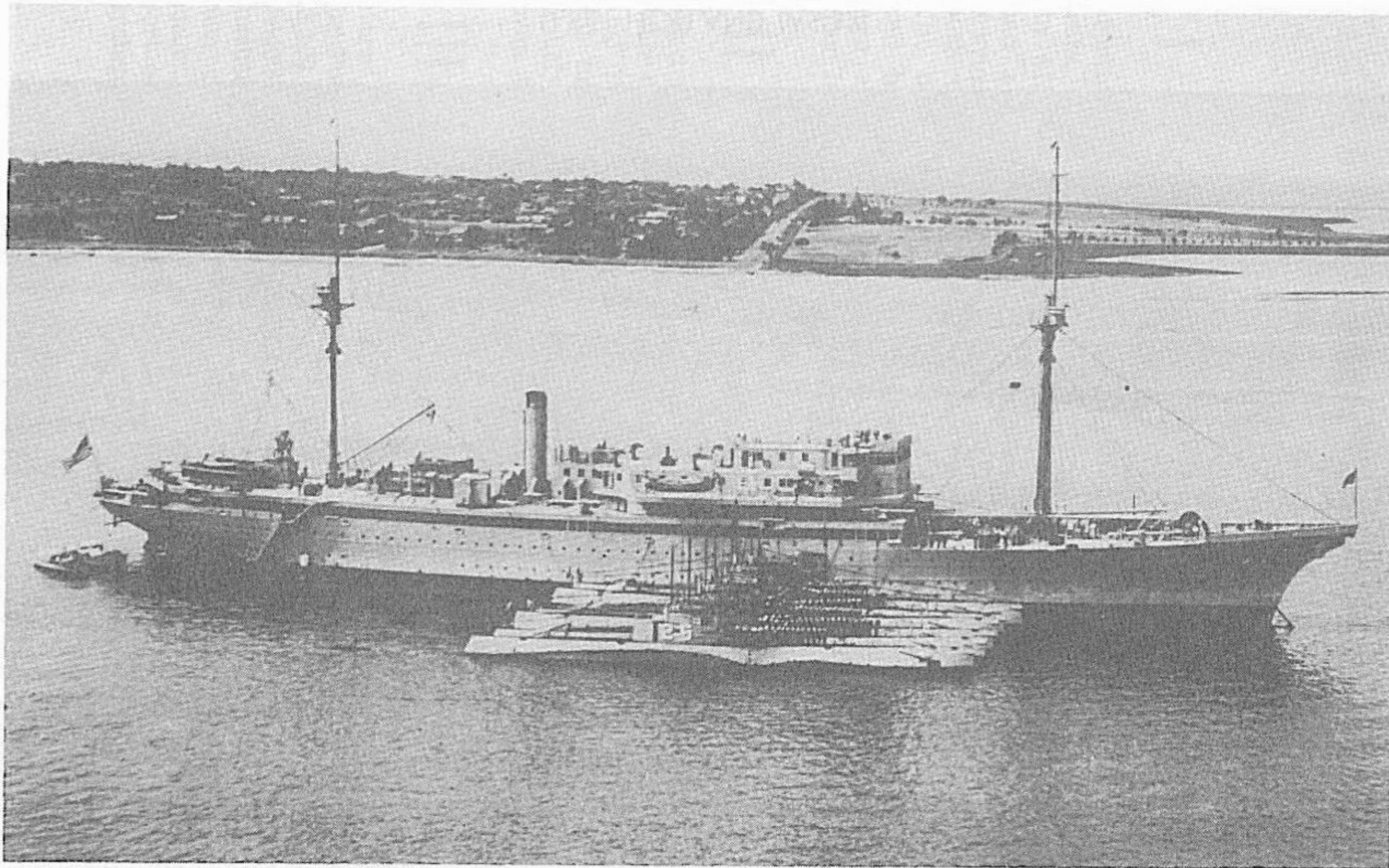




THE FIRST HOLLAND  
U.S.S. HOLLAND (S-1)

JOHN B. HOLTBY (1890-1910)





THE SECOND HOLLAND  
U.S.S. HOLLAND (AS-3)





THE HONORABLE FRED KORTH  
Secretary of the Navy

---

---





THE SECRETARY OF THE NAVY  
WASHINGTON

26 August 1963

My dear Captain Styer:

It is with great pleasure that I extend my best wishes to you, your officers and men of USS HOLLAND (AS-32) on this memorable occasion of her commissioning.

USS HOLLAND is a significant step forward in the development of naval ships and is the cumulative result of the combined efforts of many segments of the United States Navy. Upon her and all the ships of the Fleet lie the hopes and aspirations of the Navy. With her over-all strength featured by her POLARIS submarine tending capability, her very existence is an additional deterrent to aggression.

It has been said that a Navy is only as good as its ships. While this is true, a ship can be only as good as its crew. This has a more specific meaning because before a Navy can be effective, each ship must train for the highest possible state of readiness. To achieve this is the goal before you. I am confident that under the leadership and personal example of you and your officers the highest standards of moral behavior and devotion to duty will be achieved, and that HOLLAND will meet the challenge of her tasks in defense of our country in such manner as to reflect the highest credit upon the U. S. Navy.

Sincerely yours,

Captain Charles W. Styer, USN  
Prospective Commanding Officer  
USS HOLLAND (AS-32)  
c/o Supervisor of Shipbuilding, USN  
Pascagoula, Mississippi





ADMIRAL H. P. SMITH  
Commander in Chief  
U. S. Atlantic Fleet

---


---





VICE ADMIRAL ELTON W. GRENFELL  
Commander Submarine Force  
U. S. Atlantic Fleet

COMMANDER SUBMARINE FORCE  
U. S. ATLANTIC FLEET  
NORFOLK II, VA.



U. S. S. HOLLAND joins the Fleet today as a vital part of the Polaris Weapon System, which represents a large investment by the people of this nation; an investment in peace - not in war - made necessary by Communist encroachment on the free peoples of the world. HOLLAND was built only to help deter a military attack on the free world, to join PROTEUS and HUNLEY in support of our Fleet Ballistic Missile submarines, and provide ever greater mobility to an already uniquely mobile system.

With the combination of HOLLAND's ammunition depot, supply center, shipyard, and motel, Polaris submarines will be operating at sea, far removed from the soil of any free nation. Moreover, HOLLAND is always ready to move her industrial might to another location anywhere in the oceans of the earth, to support our Polaris submarines as they operate in their environment of concealment from human and electronic eyes, even those borne by outer space vehicles. Each FBM Polaris missile with a fire power exceeding the total of all bombs dropped by the Allied and Axis powers together during World War II. This weapon system is sufficiently invulnerable that it provides time for mature decisions and careful evaluation before unleashing fire-power; the kind of thinking and deliberations so necessary in order to avoid triggering her weapons at the first note of warning for fear that the launching vehicle may be destroyed in the first onslaught of an aggressor.

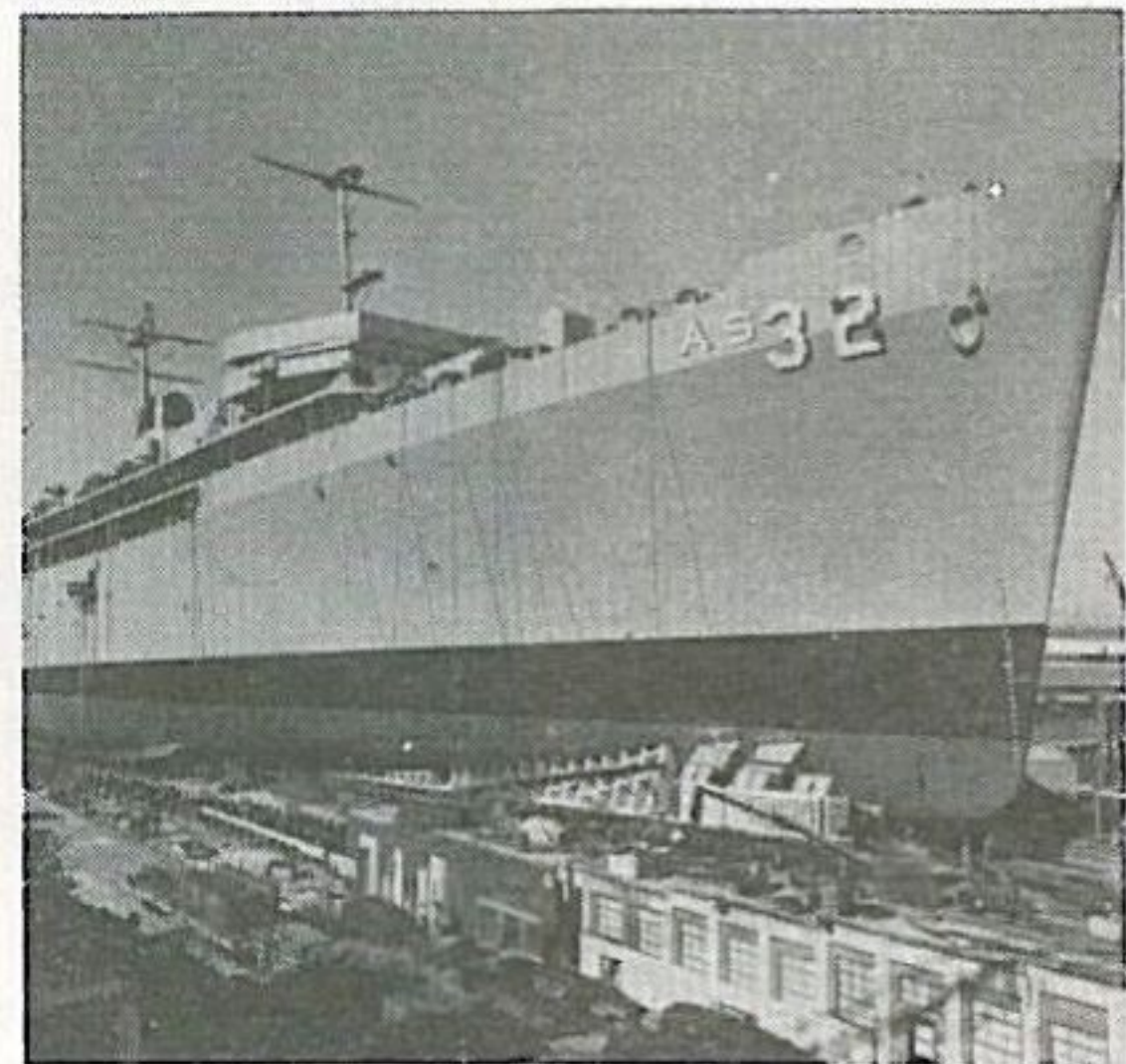
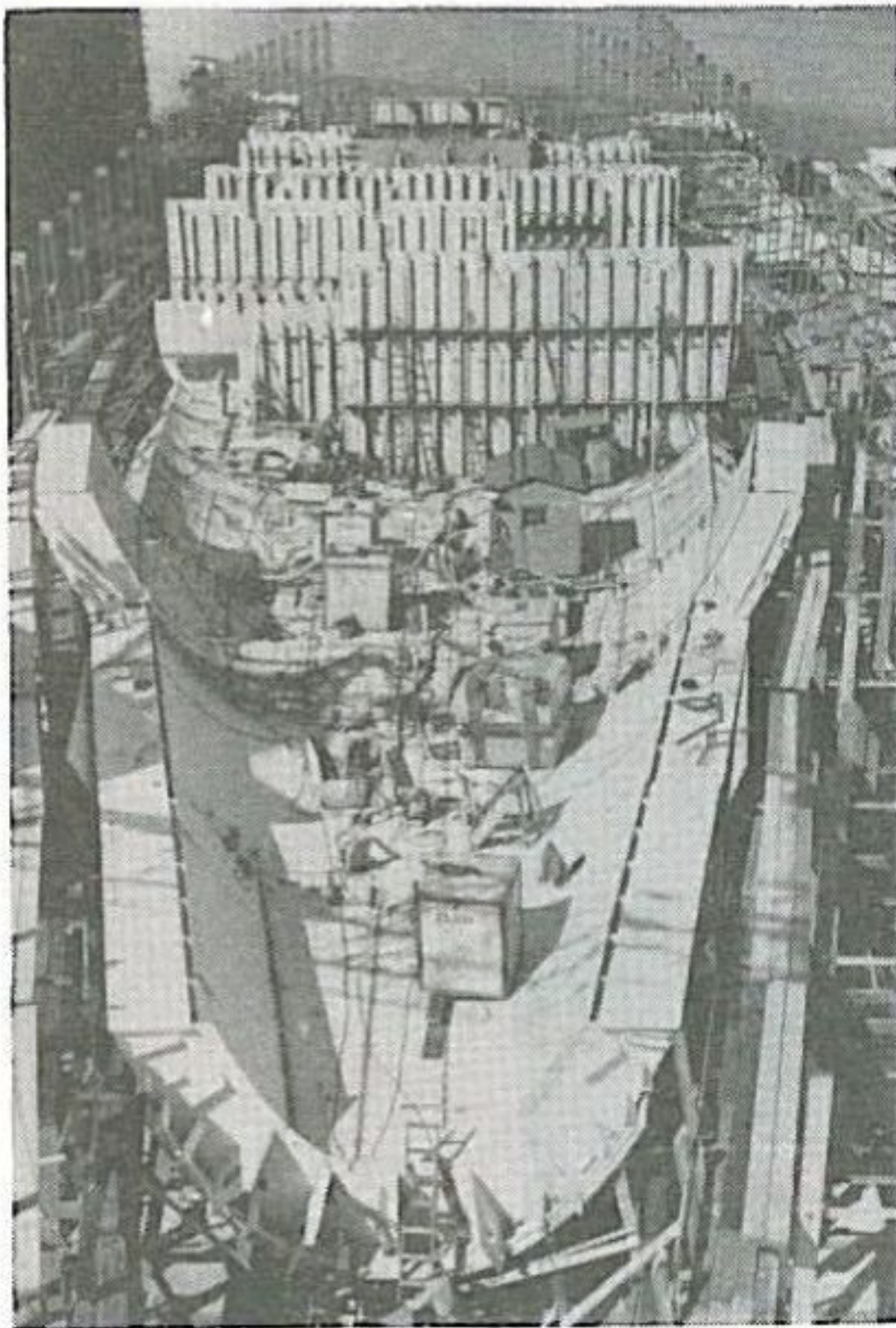
We welcome the commissioning of this fine ship, the U. S. S. HOLLAND, into the United States Navy, a ship truly representative of our Navy's significance today - MOBILE POWER FOR PEACE - may she always signify just that, unless, to preserve freedom she must fight. Then, fight she will, in her own special way, and in the highest traditions of the United States naval service.

*Elton W. Grenfell*  
ELTON W. GRENFELL  
Vice Admiral, U. S. Navy  
Commander Submarine Force, United States Atlantic Fleet





FREDRICK J. MAYO  
President, Ingalls Shipbuilding Corporation



BUILDING

---

---

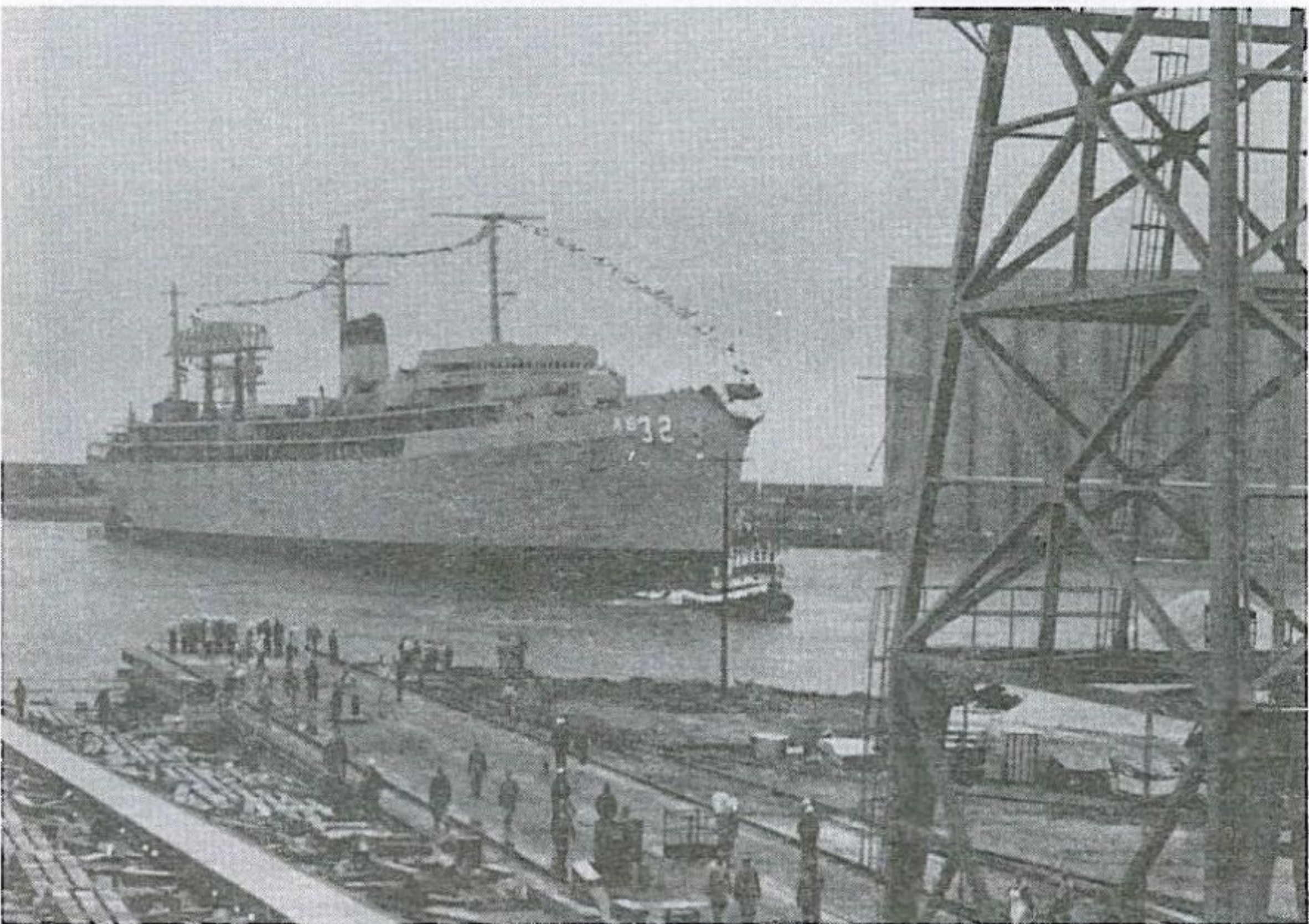




CHRISTENING



LAUNCHING



AFLOAT

---





CAPTAIN CHARLES W. STYER, JR., USN  
Commanding Officer U. S. S. HOLLAND (AS-32)

---

---





## CAPTAIN CHARLES WILKES STYER, JR., USN

Captain Charles W. Styer, Jr., was born in Orange, New Jersey, on 20 May 1919. He started his career when he enlisted in the U. S. Naval Reserve on 23 June 1936. After a short period of active duty aboard the USS CUTTLEFISH (SS 171), he entered the United States Naval Academy, Annapolis, Maryland in June of 1937. When war broke out, the academic program at the Naval Academy was accelerated and he was graduated in February of 1941. He then served aboard the USS ROWAN (DD 405) and the USS MATAGORDA (AVP 22). He entered Submarine School in June of 1942 and upon graduation he reported to the USS FLYING FISH (SS 229). During this tour, he completed four successful war patrols for which he was awarded the Secretary of the Navy Commendation Ribbon, the Bronze Star Medal, the Submarine Combat Insignia, and COMTASKFOR FORTY-TWO Letter of Commendation. In March of 1943 he became qualified in submarines, and in October of the same year he was ordered to report as Executive Officer of the USS TILEFISH (SS 307). During five more successful war patrols he was awarded two Silver Star Medals, two Bronze Star Medals, and the Submarine Combat Insignia. In July of 1945 he was given command of the USS MACKEREL (SS 204). In the latter part of 1945, he became a member of the Staff of Commander New London Group, 16th Fleet. In June of 1947, he graduated from the U. S. Naval Intelligence Post Graduate School, Washington, D. C. His next duty was with the Office of Naval Intelligence, Washington, D. C., after which he became Assistant Naval Attache at the American Embassy in Paris, France. In 1950, he reported aboard the USS RAZORBACK (SS 394) as Executive Officer, followed by two and one-half years in command of the USS CUTLASS (SS 478). He served

---

---



---

---

from 1953 to 1956 as Assignment of Forces Officer in the Fleet Operations Division of the Staff of Commander in Chief, U. S. Atlantic Fleet. In 1956, he reported to the Staff of Commander Submarine Squadron Three in San Diego, California as Operations Officer. After a year in San Diego, he reported for duty as Commander Submarine Division Sixty Three, the Atlantic Fleet Regulus Guided Missile Division. In June 1958 he reported to the Office of the Chief of Naval Operations, as Head, Surface to Surface Branch, Guided Missile Division. In September 1959, he was assigned to the Pentagon's Space and Astronautics Arm, Advanced Research Projects Agency, Department of Defense, where he was Staff Assistant to the Director, Policy and Planning Division; during this assignment, he was promoted to Captain. He served as Chief Staff Officer, Submarine Squadron Fourteen, the first Polaris Missile Submarine Squadron of the U. S. Navy, during 1960-61. During this period the first POLARIS missiles were launched submerged by USS GEORGE WASHINGTON (SSBN 598), the first POLARIS tender was deployed to Holy Loch, Scotland to tend POLARIS submarines, and the first few POLARIS submarines were deployed to their deterrent patrols. In April 1961, he was assigned as Special Assistant for Fleet Ballistic Missile Matters to Deputy Commander Submarine Force, United States Atlantic Fleet. From this latter assignment, he was ordered as the Prospective Commanding Officer of the USS HOLLAND (AS 32).

Captain Styer is married to the former Katharine Reeves of Washington, D. C. Captain and Mrs. Styer have two daughters, Katharine, 17, and Susan, 11.

---

---



---

U. S. S. HOLLAND (AS-32)

*Commissioning Ceremony*

BAND SELECTIONS

Sixth Naval District Band

INVOCATION

Commander John D. Vincer, CHC, USN  
Assistant Chaplain, Sixth Naval District

WELCOMING REMARKS

Rear Admiral Edgar H. Batcheller, USN  
Commander, Charleston Naval Shipyard

INTRODUCTION OF

Vice Admiral Elton W. Grenfell, USN  
Commander Submarine Force, United States Atlantic Fleet  
Rear Admiral Edgar H. Batcheller, USN

REMARKS AND INTRODUCTION OF

Vice Admiral Bernard L. Austin, USN  
President, U. S. Naval War College  
Vice Admiral Elton W. Grenfell, USN

ADDRESS

Vice Admiral Bernard L. Austin, USN

READING OF NAVY DEPARTMENT ORDERS TO COMMISSION

USS HOLLAND (AS 32)  
Rear Admiral Lawrence R. Daspit, USN  
Commandant, Sixth Naval District

ENSIGN, JACK AND COMMISSION PENNANT ARE HOISTED AS THE  
BAND PLAYS THE NATIONAL ANTHEM.  
THE SHIP IS NOW IN COMMISSION.

READING OF COMMANDING OFFICER'S ORDERS

Captain Charles W. Styer, Jr., USN

COMMANDING OFFICER ASSUMES COMMAND

FIRST WATCH IS SET BY EXECUTIVE OFFICER

Commander Ord Kimzey, Jr., USN

COMMANDING OFFICER GIVES THE ORDER FOR THE PERSONAL  
FLAG OF THE SENIOR ACTIVE DUTY OFFICER PRESENT TO BE  
BROKEN AT THE MAIN TRUCK.

Ruffles and Flourishes

Admiral's March.

Gun Salute

REMARKS

Captain Charles W. Styer, Jr., USN

BENEDICTION

Lieutenant Commander Stanford E. Linzey, CHC, USN

BAND SELECTIONS

Sixth Naval District Band

---



---

---

## DEPARTMENT OFFICERS



**CDR C. C. ALLEN, USN**  
Supply Officer



**CDR D. R. BASSETT, USN**  
Dental Officer



**CDR R. A. AIKEN, USN**  
Refit Coordinator



**LCDR A. L. PALAZZOLO, USN**  
Repair Officer

---

---



---

---

## DEPARTMENT OFFICERS



**LCDR L. E. MURDOCK, USN**  
Weapons Repair Officer



**LT A. K. ULLRICH, USN**  
Engineer Officer



**LT K. E. RHEA, USNR**  
Medical Officer



**LT B. D. WIXOM, USN**  
Operations Officer



**LTJG D. P. McEWAN, USN**  
Navigator

---

---



---

---

## DIVISION OFFICERS



**LCDR T. J. INGRAM, USN**  
Assistant Supply Officer



**LCDR S. E. LINZEY, USN**  
Chaplain



**LT W. SOCZEK, USN**  
Assistant Weapons Repair Officer



**LT H. C. RODGERS, USN**  
FBM Navigation Repair Officer



**LT A. E. HOCHMUTH, USN**  
Stores Officer



**LT A. A. WOOD, USN**  
Assistant Repair Officer

---

---



---

---

## DIVISION OFFICERS



**LT R. S. REPTA, USN**  
PIO and Legal Officer



**LT J. J. BROWN, USN**  
Machinery Repair Officer



**LT R. W. SCOTT, USN**  
Assistant Dental Officer



**LT I. B. PIERSON, USN**  
Production Engineer



**LT J. S. RICHTER, USNR**  
Assistant Medical Officer



**LT W. T. ASHLEY, USN**  
Fire Control Guidance Repair Officer

---

---



---

---

## DIVISION OFFICERS



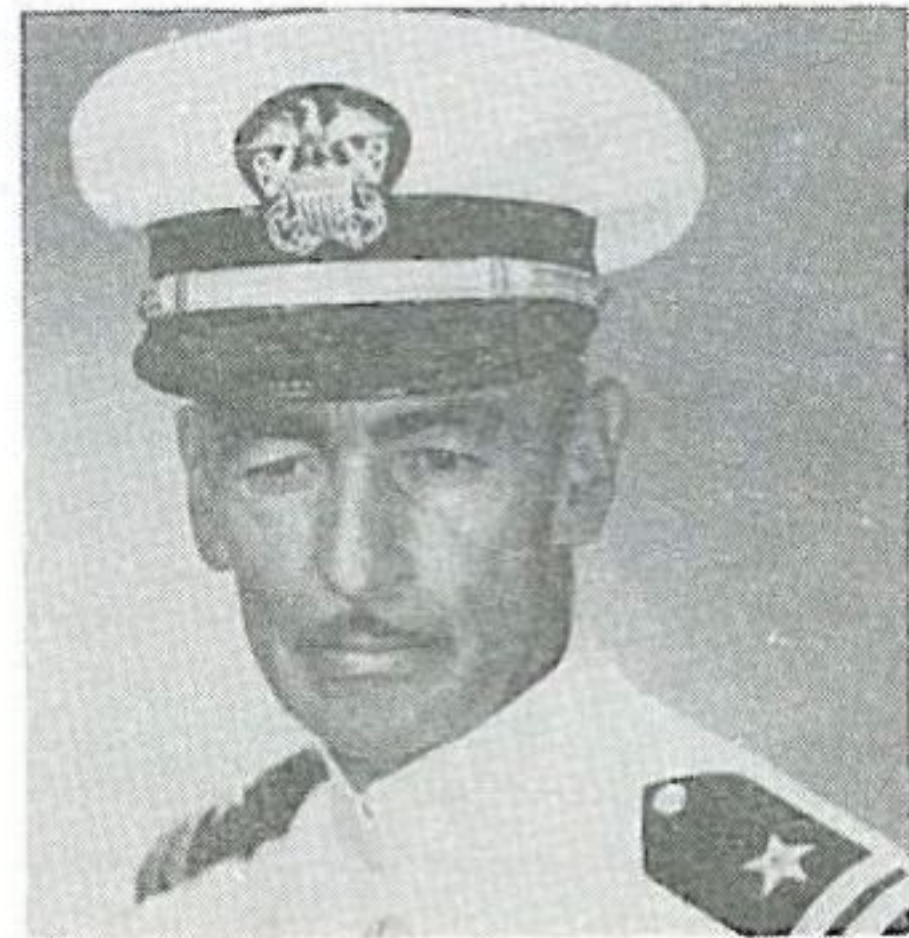
**LT G. L. DAY, USN**  
Special Weapons Repair



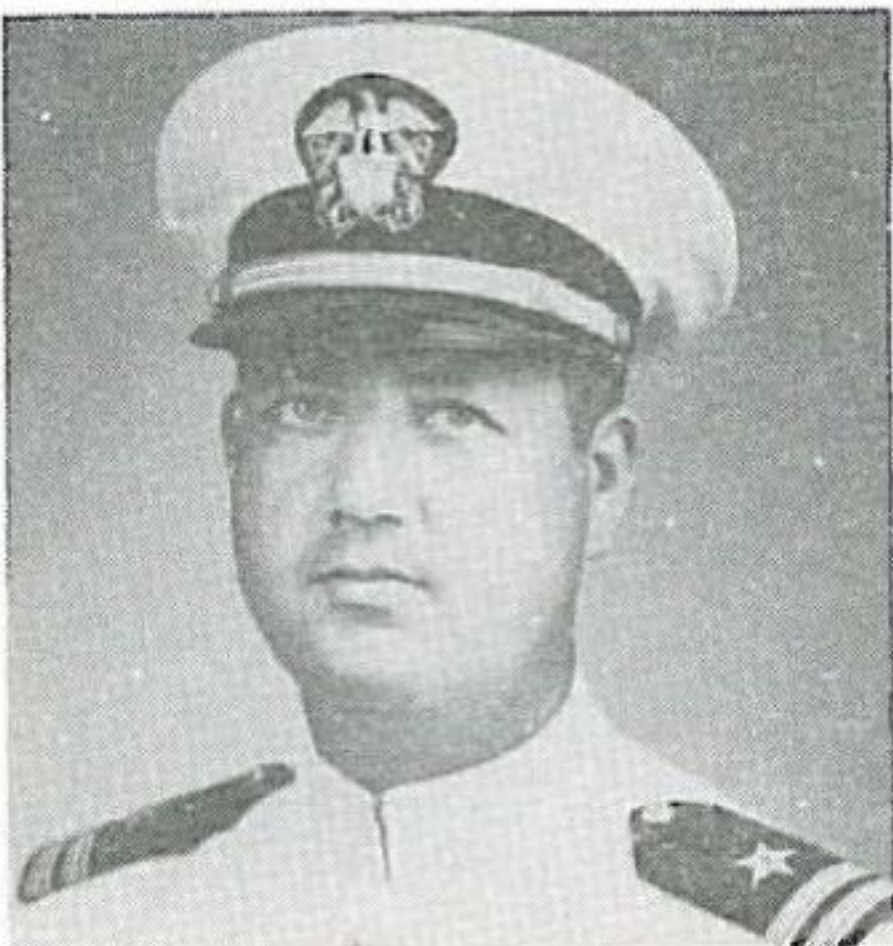
**LT J. C. HOLDORF, JR., USN**  
Damage Control Assistant



**LT R. D. WEBB, USN**  
EAM and Stock Control Officer



**LT F. L. CUMMINGS, USN**  
Repair Technical Officer



**LT H. G. CLARK, USN**  
Missile and Missile Launcher Repair Officer



**LT C. D. EIDSON, USN**  
Administrative Assistant

---

---



---

---

## DIVISION OFFICERS



**LT P. G. DORNBERG, USN**  
Torpedo and SUBROC Repair Officer



**LT H. L. HENRY, USN**  
Hull Repair Officer



**CAPT M. P. CAULFIELD, USMC**  
Commanding Officer, Marine Detachment



**LTJG M. T. CLARK, USN**  
Main Propulsion Assistant



**LTJG W. M. GOODWIN, USN**  
Repair Services Officer



**LTJG D. L. MICH, USN**  
Supply Assistance Team Officer

---

---



---

---

## DIVISION OFFICERS



**ENS B. M. ELLIS, USN**  
Assistant Machinery Repair Officer



**ENS C. W. McMAHAN, USN**  
Assistant Communications Officer



**ENS W. M. MORGAN, USN**  
Electrical Officer



**CWO A. B. REYNOLDS, USN**  
Assistant Stores Officer



**CWO L. E. TALTON, USN**  
Ship's Boatswain

---

---



---

---

## U.S.S. HOLLAND (AS-32)



### OFFICERS

CAPTAIN CHARLES W. STYER, JR., USN  
Commanding Officer

COMMANDER ORD KIMZEY, JR.  
Executive Officer

LCDR S. E. LINZEY.....Chaplain  
LT C. D. EIDSON.....Admin. Assistant  
LT R. S. REPTA.....PIO and Legal Officer  
ENS F. L. McANINCH.....Personnel Officer

### OPERATIONS DEPARTMENT

LTJG D. P. McEWAN.....Operations & Navigator  
LT B. D. WIXOM.....Communications Officer  
ENS C. W. McMAHAN.....Asst. Communications & Custodian

### ENGINEERING DEPARTMENT

LT A. K. ULLRICH.....Engineering Officer  
LT J. C. HOLDORF, JR. ....Damage Control & Main Prop Asst.

### REPAIR DEPARTMENT

CDR R. A. AIKEN.....Repair Officer  
LCDR A. L. PALAZZOLO.....Design & Planning Officer  
LT H. L. HENRY.....Hull Repair Officer  
ENS B. M. ELLIS.....Asst. Hull Repair Officer  
LT J. J. BROWN.....Machinery Repair Officer  
LTJG M. T. CLARK.....Asst. Machinery Repair Officer  
LT A. A. WOOD, JR.....Electrical Repair Officer  
LTJG R. L. JORDAN.....Electrical Repair Officer  
ENS W. M. MORGAN.....Asst. Electrical Repair Officer  
LT H. C. RODGERS.....Electronics Repair Officer  
LTJG N. L. DUDLEY.....Asst. Electronics Repair Officer  
LT I. B. PIERSON.....Nuclear Instrumentation Repair Officer  
LT W. T. ASHLEY.....Navigation Repair Officer  
LTJG W. M. GOODWIN.....Outside Machine Shop—Nuclear Officer  
LT F. L. CUMMINGS.....Asst. for Quality Control

---

---



---

---

## U.S.S. HOLLAND (AS-32)



### CREW

#### FIRST CLASS PETTY OFFICERS (Continued)

STALLINGS, Joey TM1	WALDHAUSER, R. M. TM1
ST. JOHN, Alfred L. SK1	WEINKAUF, Elmer W. SF1
SUMNER, Elijah L. MR1	WICKLIFFE, Charles T. GMT1
TATE, John M. MM1	WIGGINS, Dennis M., Jr. ET1
TOWNE, Robert J. RM1	WILLEVER, V. L. DT1
TOWNSEND, G. E. SF1	WITT, W. F., Jr. CS1
ULLOM, E. R., Jr. IC1	WOLNER, Charles A. EN1
VILLANUEVA, Filemon S. PN1	YORK, Billy E. SF1

#### SECOND CLASS PETTY OFFICERS

ALEXANDER, E. R. SFM2	DIETERLE, Charles E. EN2
ALLEN, L. R. BM2	DIKEMAN, E. W. MM2
ANDERSON, L. S. DC2	DRAKE, Ralph E. FTM2
ANDERSON, R. R. EN2	DUBLINSKI, S., Jr. CS2
ANDERSON, Wilson EN2	DURAN, Leri B. BM2
AREVALO, Tito F. EN2	DURYEA, G. W. GMT2
ASH, William E. EM2	ETHERIDGE, James D. SH2
ASHBURN, Cleophus, Jr. FTM2	FLETCHER, W. M. MR2
BARTIK, Michael W. EN2	FOLEY, Leonard K. IC2
BEAL, Donald O. TM2	GALE, Norman D. RM2
BECK, Walter N. SK2	GARBRANDT, Delbert L. SK2
BOLLINGER, S. C. QM2	GARDINSKY, R. M. MR2
BONDI, Philip A. EM2	GIBSON, Joe F. EM2
BOURGEOIS, Michael R. SK2	GLANZER, Gary A. EM2
BOWEN, Steve B. SM2	GOINS, Nelson W. SFP2
BOWMAN, Gothard E. SK2	GORINAC, George P. TM2
BRICE, David O. DC2	GRANAAS, L. P. MM2
BRIGHT, Charles W. MR2	GRANT, George H. TM2
BROWN, William G. SK2	GRIESINGER, R. A. TM2
BURKE, George H. SH2	HAGERTY, Earl E. ETN2
BURRHUS, Ernst R. MM2	HAMPSHIRE, Donald E. ETR2
BUSH, B. E. PM2	HENDRICKS, Thomas D. SH2
CALLAHAN, N. J., ML2	HIBBEN, Lynn A. ETR2
CARNEY, Paul W. EN2	HIGDON, James C. BT2
CARRINGTON, R. E. L. MM2	HITON, F. P. SK2
CARTER, Robert D. MM2	HITSON, E. W. BM2
CASSELS, W. D. MM2	HOUSE, Vernon E. SFP2
CATO, Murray P. BM2	HUDNELL, James M. MR2
CLARK, Stanley T. RM2	HUDSON, J. B. SH2
COKER, L. SH2	HUNOLD, Joseph O., Jr. ETN2
COURVILLE, J. D. YN2	INGRAM, Roger T. SFM2
COVIELLO, J. E. DK2	JENKINS, C. L. EM2
COWARD, Louis C. TM2	JOHNSON, Dennis H. SK2
DEBORD, M. V. MM2	JOHNSON, William I. MR2
DEGRAFFENREID, S. DC2	JORDAN, R. P. MR2
DENNIS, Arthur T. BM2	JUNE, William E. MM2
DERR, Earl H. SFM2	KEECH, Wade E. OM2

---

---



---

## U.S.S. HOLLAND (AS-32)



### CREW

#### FIRST CLASS PETTY OFFICERS

ADAMS, Howard RM1	JOHNSON, J. C. SF1
ALLEN, Ray SF1	JOHNSON, William E. PC1
AMOS, C. D., Jr. SF1	JONES, D. T. EM1
BANFIELD, D. R. SF1	JONES, Ralph W., Jr. FTM1
BINETTE, John R. MR1	JORGENSEN, J. L. SF1
BISHOP, James F., Jr. ET1	KEATING, Charles P., Jr. MR1
BLACKLEDGE, Donald G. YN1	KEILHOLTZ, Kenneth W. FM1
BROWN, Cabe D. SF1	KREPP, Richard H. EN1
BROWN, Danny L. ML1	KRUSE, Lance M. AG1
BUSCH, F. S. DC1	LONG, James F. SK1
BUTTS, Haze C. SH1	LONG, Rodger EN1
CALLIS, Donald L., Sr. SF1	MADDOX, Fendrick W. RM1
CARNES, John C. SK1	MAGGARD, William P. TM1
CATALANDO, Joseph G. OM1	MANSFIELD, Clyde D. EN1
CECILIONE, V. C. PC1	MARSHALL, William M. GMT1
CLIFFORD, Dennis E. CS1	McCORD, John W. OM1
CONRAD, Edwin C. QM1	McLAUGHLIN, Henry L. BT1
COOK, Gerald L. MM1	McMULLIN, Richard C. BM1
CORNELL, C. R., Jr. SF1	METHENY, D. C. SH1
DEGLOW, W., Jr. CS1	MOORE, Francis L. G. TM1
DEMILE, Forest R. EN1	MYERS, Floyd C. SK1
DIAZ, David BM1	NORTHERN, Jack L. ET1
DODDS, James R. SM1	PATRICK, Stanley, Jr. MM1
DRINKWATER, Richard B. ET1	PAULAUSKIS, W. R. SF1
DUPUIS, G. E. E. BM1	PAUL, H. G. EM1
DYER, John E. TM1	PERKINS, Ivan R. YN1
ESTILL, Emory D. YN1	PETERSEN, W. L. EN1
FANCEY, Donald T. SH1	PHILBRICK, Walter B. EN1
FLORES, Celestino SK1	POOLE, William D. BM1
FUCHS, Garland V. M. EM1	RAINES, A. L. SFP1
GAINES, Dewitt SD1	RICHARDSON, Cecil B. SK1
GIBSON, Gary R. OM1	ROBERTSON, Ray E. PM1
GINES, Pacifico SK1	ROGERS, J. E. TM1
GINN, Andrew J., Jr. SF1	ROLAND, Ronald G. IC1
GLOVER, Richard E. EM1	ROSKOPH, James E. EN1
GONSALVES, E. C. SH1	ROST, William E. MM1
GRUSHECK, M. J., Jr. MM1	SANTIAGO, R. DM1
GUIDRY, Percy J., Jr. SM1	SCHAFFER, R. D. EN1
HAMBLIN, Arthur R. SK1	SCHUSTER, Leslie OM1
HANGER, Marvin H. IC1	SCUDELLARI, Charles M. DK1
HARVEY, G. L., Jr. MM1	SEALS, David L. SF1
HAYDEN, James E. CS1	SHAD, Sanford DC1
HICKMAN, J. E. SH1	SICARD, Paul E. IM2
HOLBERT, James E. SM1	SIMMONS, C. W. DC1
HOLDERFIELD, Franklin D. SF1	SMITH, Bobby V. LI1
HORNER, Charles E. ET1	SMITH, Donald C. PN1
HOUSTON, Vance A. SK1	SMITH, Robert L. EN1
JARRELL, Howard R., Jr. SK1	SMITH, William J. SF1
JOHNSON, Carl K. RM1	SNELGROVE, M. EN1

---



---

## U.S.S. HOLLAND (AS-32)



### CREW

#### THIRD CLASS PETTY OFFICER (Continued)

SCHULTZ, P. C. MR3	THAMES, Kelly, Jr. SK3
SEPTON, N. W. SFM3	TROTT, D. J. SH3
SHEPPARD, L. F. SH3	VANDERGRIFF, R. R. EM3
SHOOK, L. H. GMG3	WALLER, David R. DK3
SIMPSON, James L. DC3	WALTER, William E. EN3
SNYDER, R. R. ETN3	WEATHERLY, Leroy R. MA3
SPOONER, H. A. SFP3	WHALEY, R. V., Jr. SK3
STECKER, Carl E. SFM3	WHITE, George L. IC3
STONE, Richard R. MT3	WISECUP, Larry W. SK3
STRYKER, Paul F. MR3	WOOD, Reginald C. TM3
SUESSER, Eric G. MM3	YAKUBOW, M. J. MR3
TEMPLETON, M. D. EM3	ZARZYCKI, John C. SK3

#### PAY GRADE E-3

ADAMS, David A. FN	CARTER, J. Q. FN
ADAMS, Edwin FN	CARTER, C. K. SN
ALDRIDGE, Henry S. FN	CARTY, Patrick M. FN
ALLEN, James M. FN	CARVER, Roger Lee SN
AMATUCCI, Robert FN	CHARRON, John A. FN
ARCHER, David PNSN	CHEROCK, M. J. SN
BALL, W. L. FN	CICCONI, Leo A. FN
BALZER, James J. FN	CLEVELAND, R. E., Jr. FN
BANZON, F. V. TN	COLE, J. M. FN
BARBER, John L. SN	COMPANION, L. R. SN
BARNES, R. W. FN	CRISOSTOMO, Ponciano TN
BATTLES, C. D. FN	CURB, Charles R. MMFN
BEAN, W. E., Jr. SN	CZAJKOWSKI, H. T. FN
BELL, Thomas E. ETRSN	DARNELL, Hubert E. FN
BEMIS, Robert E. BMSN	DAVIS, J. Y., Jr. FN
BERRY, E. C. SN	DELAROSA, C. A. TN
BLACKLEY, D. M. FN	DENNIS, F. G. SN
BLEDSE, H. L. CS3	DERRICO, Donald J. SN
BLOODWORTH, J. W. EMFN	DESANTIS, F. J. TMSN
BOLDMAN, H. L. FN	DIEGO, Verceo J. TN
BOLTON, M. E. FN	DISTASIO T. W. ETRSN
BOOTHE, Roger E. EMFN	DODGE, Marvin S. FN
BOWEN, Rodger D. SN	DONALD, Michael SN
BOWMAN, Donald D. FN	DYKES, Larry L. ETNSN
BOYD, Charles SN	DZUBAK, Raymond S. FN
BRADFORD, A. P. FN	ENBRADOR, B. B. SN
BRAY, Charles M. HN	FANNING, W. J., Jr. ETRSN
BREGE, R. A. SN	FARLEY, Kevin B. SN
BROWN, James J. YNSN	FARRAN, John J. FN
BROWN, S. B., II ENFN	FARRISSEY, Noel C. FN
BUTLER, Billy W. ENFN	FEE, Allen E. FN
CALLOW, James D. SN	FELLAND, Robert W. FN
CARRAWAY, C. B. FN	FONTANA, G. J. FN

---



---

---

## U.S.S. HOLLAND (AS-32)



### CREW

#### PAY GRADE E-3 (Continued)

FOX, Samuel A. EM2  
FRENCH, A. L. FN  
FUHRMEISTER, T. H. EMFN  
GIBBS, James E. SN  
GIBSON, Frank A. MTNSN  
GLADWIN, James C. SN  
GLEATON, C. E. SN  
GLOVER, D. T. FN  
GRAEME, R. T. DKS  
HADDEN, Gordon H. MASN  
HALE, Mansuel C. SN  
HARGRAVES, M. L. FN  
HARRIS, Larry W. FN  
HEON, Richard E. FN  
HITCHCOCK, J. W. ETRSN  
HOLSER, R. A. RMSN  
HUMPHREY, F. M. TMSN  
JABAS, D. E. FN  
JONES, Oather L. FN  
KEMPER, W. J. SN  
KENT, Lowell R. ETNSN  
KIPLIN, Robert H. SN  
KLEIBER, C. G. SN  
KOEPEKE, J. V. FN  
KUBECK, William FN  
KUBERRY, D. A. FN  
KUCK, R. L. FN  
KUPER, Aloys V. FN  
LAFAYETTE, R. W. SFMFN  
LANDEN, G. D. FN  
LANDON, M. P. ICFN  
LATIMER, L. L. HN  
LEE, Willie J. TN  
LEJUNE, Kermit J. FN  
LIPS, Harold D. FN  
LITTLE, L. R. MLFN  
LUCKY, Jesse R. SN  
LUNGER, R. L. ENFN  
LUNSFORD, Jerry C. ETRSN  
MACDONALD, John S. FN  
MACHADO, L. J. SN  
MALMGREN, W. A. ETRSN  
MANION, Robert G. HN  
MANNING, Larry D. BMSN  
MANNION, J. EMFN  
MARELICK, J. J. SN  
McCLURE, James W. FN  
McCARTHY, W. P. SN  
McCORQUODALE, J. C. TMSN  
McCULLOUGH, E. R. TMSN  
McMANNAMY, A. H. SN  
MEEK, Alan D. SN  
MILLER, Gerald A. SN  
MILLER, David E. SN  
MILTON, Paul O. FN  
MONTERO, John R. FN  
MOODY, William D. FN  
MOONEY, Forrest P. ENFN  
MOREFIELD, J. C. ENFN  
MORIN, Richard A. MRFN  
MULLIS, F. B., Jr. DKS  
NELSON, C. C. FN  
OSIER, Martin F. ETNSN  
OWENS, Floyd E. FN  
PARCHMAN, L. J. FN  
PASSWATERS, J. E. FN  
PATTERSON, Jesse FN  
PATTI, R. G. SN  
PENTTILA, L. G. ETRSN  
PERRY, Marvin H. SN  
PIERSON, Ivan F. SN  
PIGAO, F. F. TN  
PIORKOWSKI, R. H. FN  
POPA, James W. ETNSN  
POTTENGER, D. R. ENFN  
PRESCOTT, E. L. SFMFN  
PREVOST, F. E. FN  
PREZIOSO, R. L. SN  
PUIG, Peter E. SFMFN  
PURSER, Donald R. FN  
PUSKAS, Francis SN  
QUINN, J. L. ETRSN  
RADCLIFF, J. B. ICFN  
RAMOS, Luis ENFN  
REACH, William P. MASN  
REINEKE, O. P. FN  
RHOADES, Ned R. SN  
RICHARD, R. J. SN  
RITTER, Darrell R. SN  
ROACH, L. E. SN  
ROGERS, William E. FN  
ROY, J. E. FN  
RUSSELL, G. C. SN  
RYDER, John W. FN  
SALTER, James E. FN  
SAUNDERS, William T. MTSN  
SCHECHTER, Ian H. SN  
SCHINDLER, L. D. SOSSN

---

---



---

---

## U.S.S. HOLLAND (AS-32)



### CREW

#### PAY GRADE E-3 (Continued)

SCHOMBERG, J. A. SN	TORIBIO, C. A. TN
SCHUSTER, F. L. YNSN	TRAMANTANO, P. N. FN
SCHUSTER, H. M. SN	TRUEBLOOD, W. SN
SEALES, J. I. SN	VALENZUELA, A. N. TN
SHAFFER, T. R. SN	VANTA, R. Z. TN
SHELBY, Donald E. FN	VERNON, Mickey D. FN
SKIPPER, Thomas O., Jr. FTMSN	WAGLE, Terry L. FN
SMEATON, J. R., Jr. ICFN	WALKER, J. A. RMSN
SMITH, William M. FN	WALTERS, J. F., Jr. FN
SMITH, William L. MMFN	WELCH, John L. DN
SMUCK, W. A. FN	WHITE, Dennis J. FN
SNELL, Mark W. SN	WIELGUS, Martin ETRSN
STAHLI, Walter J. SN	WILLIAMSON, C. P. ETRSN
STARK, John E. FN	WILSON, H. V., Jr. SN
SURIO, A. K. TN	WINDSOR, J. H., SN
SWANBERG, Carl E. ETRSN	WINEGARD, D. E. SN
TALKINGTON, R., Jr. SN	WOODWARD, L. C. FN
TENNANT, M. D. SN	WOODSON, Frank R. FN
TERRY, Sherman FN	WRIEDEN, A. W. ENFN
THORNTON, J. W. SN	

#### PAY GRADE E-2

ANDERSON, James P. MASA	COMIS, Harold T. SFPFA
ANNUIK, C. T. SA	COOKE, Stephen G. SA
ANSELMO, A. G. SA	CORRIGAN, W. R. SA
ARCHBOLD, J. L. EMFA	COX, E. C. ENFA
AVERY, Paul W. SA	CRAIG, Robert S. FA
BABOO, F. S., Jr. FA	DAILEY, S. A. FA
BALOLONG, David A. TA	DAVIS, C. W., Jr. ENFA
BARY, Martin W. FA	DAVIDSON, R. L. EMFA
BEAMAN, David M. FA	DESIMONE, J. J. FA
BENJAMIN, J. F. ETRSA	DILLEY, David P. QMSA
BENTLEY, J. J. SFMFA	DOATY, Dennis C. SA
BLALOCK, H. D. SA	DUNAJECZ, D. L. SA
BLANKA, Juris MMFA	ENRIGHT, M. J. EMFA
BLEAKLEY, R. F. SA	ERWIN, John L. SA
BLESS, Gerald J. FA	FLESH, Terrence M. SA
BOWMAN, Kent G. EMFA	FLOY, Warren L. DA
BRACILIANO, P., Jr. SA	FORBES, R. N. SFPFA
BRANDON, David O. SA	FORTI, J. W., Jr. FA
BRONG, Thomas R. EMFA	FOWSER, Dale A. RMSA
BURNS, C. L. FA	GARDNER, Dean W. MMFA
CAMPBELL, L. R. FA	GARZA, E. H. MMFA
CATES, Kenneth L. RMSA	GIBBS, Kelly D. RMSA
CHILOS, George A. SFMFA	GODFREY, T. W. SA
CLARK, Robert N. FA	GORMLEY, R. A. FA
COLLIER, C. W., Jr. SFPFA	GURA, Michael A. SA

---

---



---

## U.S.S. HOLLAND (AS-32)



### CREW

#### PAY GRADE E-2 (Continued)

GUSTAFSON, E. B. EMFA	RENAUD, A. J., Jr. MMFA
HAMBY, D. M. FA	RICHARDSON, F. W. SFMFA
HAMILTON, L. E. FA	RIDINGS, B. E. RMSA
HUGHES, D. G. ENFA	RIGSBY, W. L., Jr. FA
HUTCHINSON, G. S. MMFA	ROBERTS, L. L. SA
INGERSOLL, F. A. SA	ROBERTS, R. G. SA
JAMISON, D. D. RMSA	RUNSHANG, A. A., Jr. TMSA
JARDINE, Colin W. FA	RUSSELL, George E. TMSA
KEELEY, Edward C. FA	RUSSO, N. A. FA
KELLOGG, K. M. MMFA	SCHEELE, Rex N. FA
KIRCHMAN, E. W. ENFA	SCHRODER, H. B., Jr.
KIRKBRIDE, R. L. FA	SCOTT, Burr D. SA
KLEINSORGEN, C. SA	SEKTOE, James L. FA
KRASKEY, G. D., Jr. TMSA	SELLIN, Thomas C. FA
KRETZMER, R. E., Jr. FA	SMITH, Joseph L. FA
KUHN, R. J. SA	SMITHERS, R. E. FA
KUNTZE, Marvin G. MMFA	SNYDER, G. W. SA
KUPPEK, Anton FA	SOOBITSKY, B. C. SA
KURISKY, T. A. SA	SPICKELMIER, S. H. TMSA
LAKOVITCH, C. A. SA	STACKPOLE, E. D., Jr. EMFA
LAPIDUS, Daniel A. ENFA	STALLINGS, James E. MASA
LAVOIE, Arthur E. SA	STANNARD, L. W., Jr. FA
LEATHERMAN, D. I. TMSA	STEPULITIS, E. P. SA
LEIGH, R. W. FA	STREFF, Larry A. FA
LOPEZ, Richard EMFA	STREETER, J. R. TMSA
LUCE, Richard C. FA	SULLIVAN, H. E. FA
MAHONEY, William J. MASA	SULLIVAN, R. F. RMSA
MAJESKI, Thomas J. SA	SWAIN, Gary A. FA
MASSINGER, W. M. FA	TAYLOR, R. E. SFMFA
MEDUNICK, G. D., Jr. FA	TOTTEN, Allen J. SFMFA
MEHAFFEY, J. E. SA	VANCE, James P. DA
MERENDINO, A. G., Jr. SA	VANDERZEF, W. E. SFPFA
MILLER, G. R. TMSA	VERHAGE, M. G. ENFA
MILLER, S. L. ENFA	VIGORITO, G. A. SA
MONTGOMERY, R. E. SA	VOGEL, Robert L. TMSA
MORRISON, Billy F. FA	WANNER, D. L. ENFA
NAGY, Edward W. FA	WEBER, Gary R. MMFA
NATALE, G. P. EMFA	WEGMANN, E. A., Jr. SFPFA
NAUMAN, W. A. FA	WETHERBEE, J. A. SA
NEELD, Walter J. TMSA	WHITEHEAD, W. R., Jr. DA
NEVINS, Raymond J. OMSA	WHITCOMB, W. H., Jr. FA
NIPPER, Teddy M. MMFA	WIEBE, Ronald L. SA
NOLAND, J. A., Jr. SA	WILE, David E. SA
ORCUTT, Robert W. FA	WILKINSON, W. E. SA
PARA, Raymond A. EMFA	WILSON, R. W. FA
PARADIS, R. ENFA	WINBORN, Paul J. ENFA
PELTIER, S. F. SA	WINGATE, Jack R. SFMFA
PENISTEN, James R. SA	WINOT, W. E. ENFA
PETERSEN, Guy L. SA	WITTHOEFT, S. H. SFPFA
RANSOM, A. SA	WOOD, Robert V. SA

---



---

---

— NOTES —



